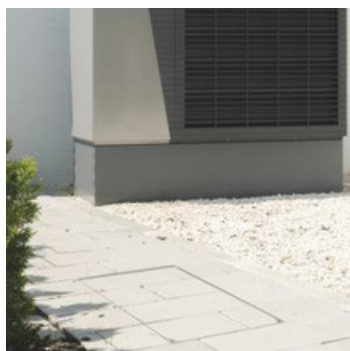


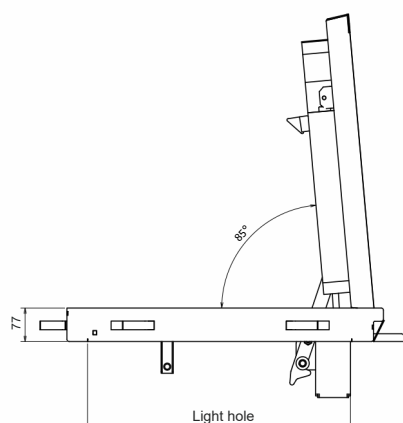
FLOOR ACCESS COVER IN STAINLESS STEEL

System MA-TH - thermal

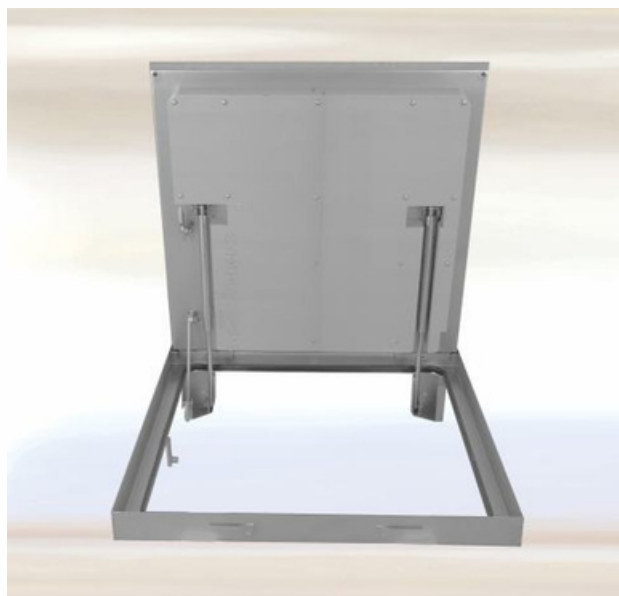


The Series MA-TH floor access cover is made of stainless steel. The depth of the tray is 50 mm and the installation height is 77 mm. The floor access cover is equipped with one special gasket along the entire perimeter. The frame is embedded in concrete at floor level.

Subsequently, the tray can be filled and inserted into the frame. The cover is fixed to the frame on 2 corner points. The opening is helped by the high-quality gas pressure springs in a way that the access cover can be opened and closed by one single person. Safety is guaranteed by a fall protection device. The tray can be filled with paving, tiles, concrete, artificial resin, granite, terrazzo tiles, wood and hard floor covering other materials.



Option: also available with drainage kit on request



ITEM	Overall frame size [ca. mm]	Light hole [ca. mm]	Empty weight [ca. kg]	M - S
MA-TH-600600E75	701 x 726	600 x 600	36 kg	S
MA-TH-800800E75	901 x 926	800 x 800	42 kg	S
MA-TH-10001000E75	1101 x 1126	1000 x 1000	61 kg	S

M Available in stock while supplies last

S Customized production

APPLICATION

For indoor and outdoor floor dust.

APPLICATION FIELDS

For Floor Access covers that are opened frequently without having to make any special effort. Indicated for the maintenance of technical rooms such as those for swimming pools. The opening and closing of the compartment takes place without particular effort.

MATERIAL

Frame and tray made of 2,5 mm Stainless steel.

INSTALLATION AND OPENING

The installation shall be implemented in a professional manner in accordance with our installation instructions. A lifting key and installation instructions are included with every FF floor access cover.

CUSTOMIZED SOLUTIONS

Customized production upon customer enquiry.

PARTICOLARI VANTAGGI

- With thermal plate
- Almost invisible when installed
- Power-assisted opening and closure
- With frost- and weather- resistant special sealing joint
- Short lead time production
- Own production

LOAD

